

DRIVING CLINIC

ĊENTRU SONIA TANTI TAQSIMA
HAJJA INDIPENDENTI (STILC)

SONIA TANTI INDEPENDENT LIVING CENTRE (STILC)



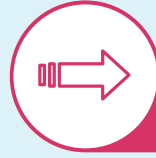




IL-PROĊESS

Wara l-appuntament mal-Occupational Therapist, inti meħtieġ li ssegwi r-rakkomandazzjonijiet mogħtija lilek matul l-appuntament. Dawn ir-rakkomandazzjonijiet se jkunu differenti għal kull klijent. Tista' tintalab tagħmel dan li ġej:

- Tagħmel valutazzjoni/jiet fit-triq ma' għalliem tas-sewqan. Inti għandek tagħti r-rapport bil-miktub mogħti lilek mit-terapista lill-għalliem tas-sewqan. In-numru ta' sessjonijiet jista' jvarja. L-għalliem tas-sewqan imbagħad jibgħatilna aġġornamenti fuq **stilc.support@gov.mt** f'ismek.
- Tattendi appuntament oftalmiku jekk ikun meħtieġ u tipprovdina b'rapport.
- Tattendi għal konsultazzjoni ma' professjonist/a/i ieħor/oħra/oħrajn kif indikat matul il-valutazzjoni tas-sewqan u mbagħad tipprovdina b'nota medika.
- Tagħmel il-modifiki rakkomandati meħtieġa lill-karozza skont il-ħtiġijiet individwali tal-individwu*.



THE PROCESS

After the appointment with the Occupational Therapist, you are required to follow the recommendations given to you during the appointment. These recommendations will be different for each client. You may be asked to do the following:

- *Sit for on the road assessment/s with a driving instructor. You are to hand the written report given to you by the therapist to the driving instructor. The number of sessions may vary. The driving instructor will then send feedback to us on **stilc.support@gov.mt** on your behalf.*
- *Attend an ophthalmic appointment as may be required and provide us with a report.*
- *Attend for a consultation with another professional/s as guided during the driving assessment and then provide us with a medical note.*
- *Make the necessary recommended modifications to the car depending on one's individual needs*.*



*FINANZJAMENT

Tinghata għajnuna finanzjarja permezz tal-People Assistance Schemes fi ħdan Aġenzija Sapport. Tista' tapplika għal dawn l-iskemi li ġejjin:

- Sussidju fuq vettura drive from wheelchair
- Sussidju fuq vettura modifikata u aċċessibbli għas-siġġu tar-roti
- Eżenzjoni mill-ħlas tal-liċenzja tat-triq fuq vettura
- Eżenzjoni mit-taxxa tar-reġistrazzjoni fuq vettura

Għal modifiki fuq il-vettura, tista' tibbenefika mill-Empowerment Scheme billi timla l-formoli rispettivi. Ikollok bżonn il-Karta Ewropea tad-Dizabilità sabiex tkun tista' tapplika.

Nota: Tabib mediku għandu jimla s-sezzjoni medika tal-applikazzjoni tal-Empowerment Scheme. Ir-Rapport Professionali jimtela mit-terapista/i li jagħmlulek l-assessjar matul l-appuntament ta' revizjoni.

Jekk il-fornitur m'għandux l-apparat li għandek bżonn, saqsi għal din l-informazzjoni bil-kitba u din titqies bħala kwotazzjoni.



*FUNDING

Financial support is available through the People Assistance Schemes of Aġenzija Sapport. You may apply for the following schemes:

- Drive from wheelchair vehicle grant
- Grant on modified, wheelchair accessible vehicles
- Exemption from payment of the vehicle road licence
- Exemption from payment of the vehicle registration tax

For car modifications, you may benefit from the Empowerment Scheme by filling the respective forms. Having the European Disability Card is necessary to apply.

Note: A medical doctor should fill in the medical section whilst the Professional Report will be filled in by the assessing therapist/s during the review appointment.

If the supplier does not have the desired product, ask for this in writing so it will be considered as a valid quotation.

Tista' ssaqsi għal kwotazzjonijiet permezz ta' email għaliex din tgħodd bħala prova li inti pruvajt iġġib kwotazzjonijiet.

Impjegati minn Sapport ikunu jistgħu jagħtuk gwida dwar kif tapplika għal dawn l-iskemi.

Tista' wkoll tibbenefika minn aktar sussidju finanzjarju jekk tapplika mal-Malta Community Chest Fund fuq www.mccff.org.mt. Il-Malta Community Chest Fund tista' titolbok l-lttra ta' Konferma tal-Empowerment Scheme.

Unanswered email requests to the supplier will also serve as proof that you have tried to source the quotes.

Sapport staff will be able to guide you on how to apply for these schemes.

You can also benefit from further financial subsidy by applying with the Malta Community Chest Fund on www.mccff.org.mt. The Malta Community Chest Fund may ask you for the Empowerment Scheme Confirmation Letter.





APPUNTAMENT TA' REVIZJONI

- Ladarba tikseb it-3 kwotazzjonijiet ser ikollok b'zonn appuntament ta' revizjoni mat-terapisti. Tista' tikkuntattja lil STILC fuq **stilc.support@gov.mt** jew fuq **2165 3991** jew **7713 2310** biex tagħmel appuntament ta' revizjoni. Appuntamenti ta' revizjoni f'ċerti każijiet jistgħu jsiru onlajn. Staqsi dwar dan meta tikkuntattjana.
- Ibgħat ilna t-3 kwotazzjonijiet qabel l-appuntament permezz ta' email fuq **stilc.support@gov.mt**. Jekk m'għandekx aċċess għall-email, jekk jogħġbok ġib id-dokumenti miegħek meta tattendi l-appuntament ta' revizjoni.
- Jekk il-kwotazzjonijiet ma jiġux ipprezentati lit-terapisti matul l-appuntament ta' revizjoni, it-terapisti ma jkunux jistgħu jiffinalizzaw ir-Rapport Professjonali tal-Empowerment Scheme, li mbagħad jirriżulta f'dewmien fil-proċess ta' finanzjament.
- Huwa biss wara li l-klijent ikun fil-pussess tat-3 kwotazzjonijiet li jista' jingħata appuntament ta' revizjoni.



REVIEW APPOINTMENT

- *Once you obtain all the 3 quotes, you will need a review appointment with the therapists. You may contact STILC on **stilc.support@gov.mt** or on **2165 3991** or **7713 2310** to set a review appointment. Review appointments can sometimes be held online. Ask about this when you contact us.*
- *The 3 quotations should be sent prior to the appointment as a scanned document via email on **stilc.support@gov.mt**. If you do not have access to an email account, kindly bring these with you when attending the review appointment.*
- *If the quotes are not made available to the therapists during the review appointment, the therapists will not be able to finalise the Empowerment Scheme Professional Report, which will then result in a delay in the funding process.*
- *Only after the client is in possession of the 3 quotations they can be given a review appointment.*



AKTAR NOTI

- Il-kopji originali ta' dawn id-dokumenti għandhom jinżammu siguri mill-klijent għal użu aktar tard.
- Attendi għal spezzjoni tal-karozza, jekk meħtieġ. Inti se tingħata parir dwar dan bil-miktub.
- Huwa importanti li wieħed ma jsuqx jekk ikun ingħata struzzjonijiet biex ma jsuqx mill-Occupational Therapist li jkun qed jagħmel l-assessjar tiegħek. Id-deċiżjoni finali dwar il-liċenzji tas-sewqan taqa' taħt ir-responsabbiltà ta' Transport Malta.
- Jekk wara l-assessjar tas-sewqan tixtieq tibda l-lezzjonijiet tas-sewqan billi tuża l-karozzi modifikati tagħna, jeħtieġlek tapplika għal permess tas-sewqan ma' Transport Malta. Jekk jogħġbok ikkuntattjana sabiex inkunu nistgħu niggwidawk dwar l-applikazzjoni tiegħek għal permess tas-sewqan biex tibda l-lezzjonijiet tas-sewqan mal-Adaptive Motoring School ta' Aġenzija Support.



FURTHER NOTES

- *The original copies of these documents should be kept safe by the client for further use.*
- *Attend for a car inspection, if necessary. You will be advised about this in writing.*
- *It is important that one does not drive if they have been instructed to refrain from driving by your assessing Occupational Therapist. The final decision about driving licences falls within the responsibility of Transport Malta.*
- *If following the driving assessment you would like to start driving lessons using our modified cars, you need to apply for a driving permit with Transport Malta. Please contact us so we can guide you about your application for a driving permit to start taking driving lessons with the Aġenzija Support Adaptive Driving Motoring School.*

AĠENZIJA SAPPORT

Ċentru Sonia Tanti Taqsima Hajja Indipendenti,
Ċentru Pastoralu Qalb ta' Ġesù,
Triq il-Bizantini, Qrendi QRD 1802
+356 2165 3991 / +356 7713 2310

Aġenzija Sapport Helpline – Freephone 153
(aġħfas 5/press 5)

stilc.sapport@gov.mt

www.sapport.gov.mt

